

DROP IS LIFE

**“GREEN IS MUCH MORE THAN A COLOUR
IT’S A RESPONSIBILITY”**

 **NOVELLINI**

“What seemed like the right thing to do at the beginning has also become the smart choice.

Quality, innovation and respect for the environment are the cornerstones of our ethical code.”







Environmental sustainability has always been the hallmark of Novellini's vision and represents the foundation on which it bases its business models.

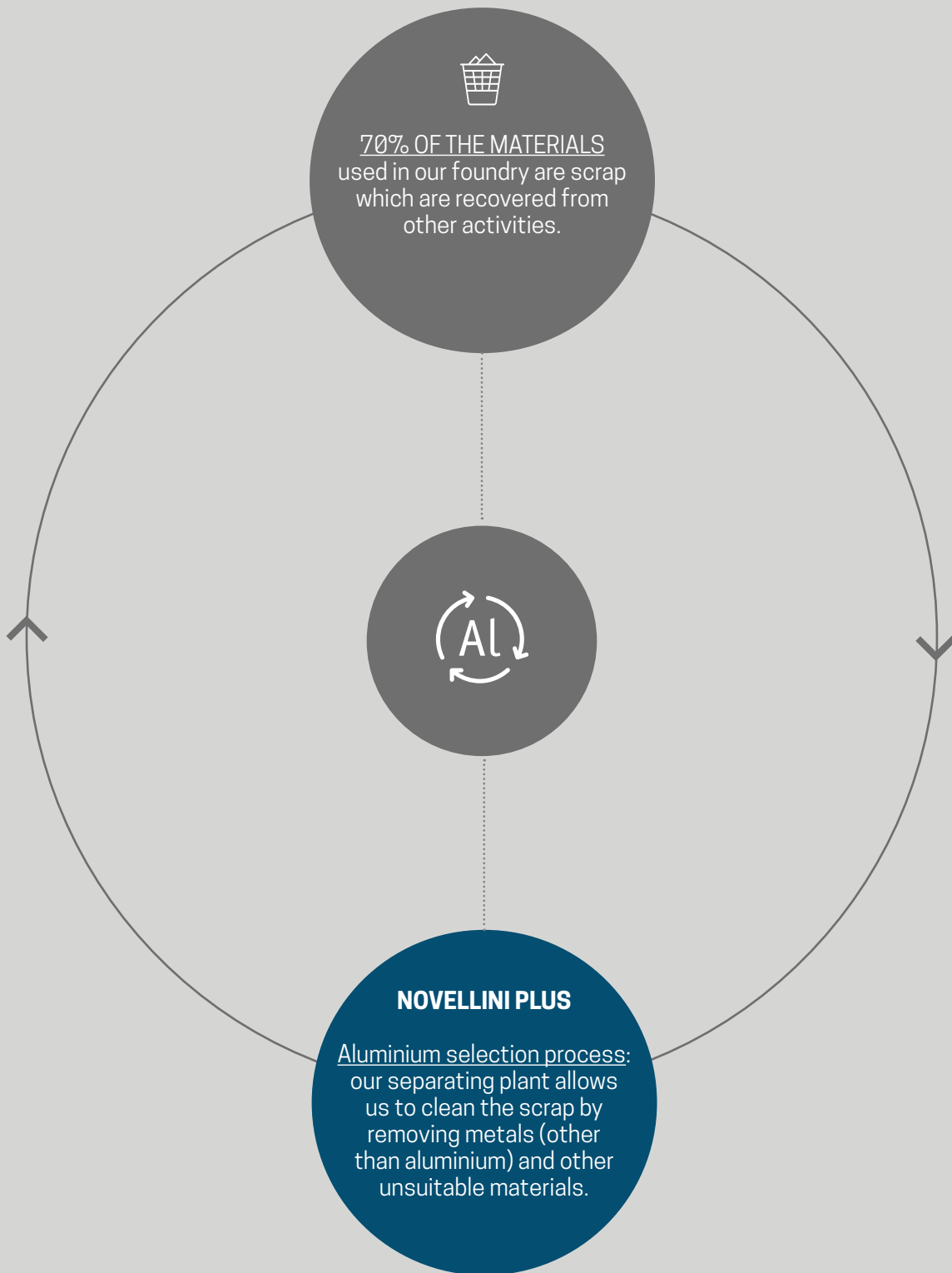




ALUMINIUM

AL

Just two letters from which a story has been forged; a renewable production process.

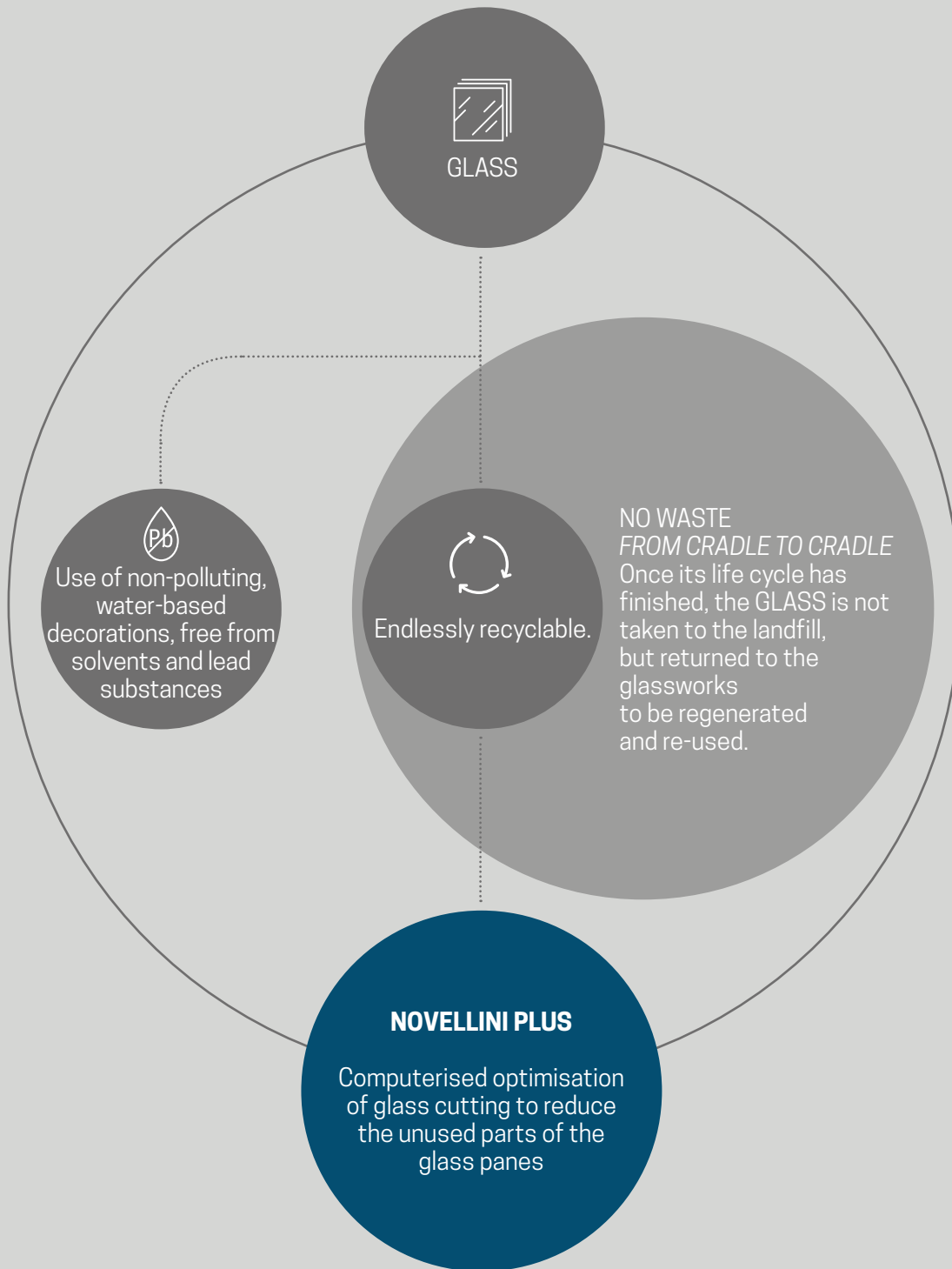




GLASS

Recycle, re-use, recover

Three main cornerstones when talking about circular economy, the model in which Novellini has always invested to make its operations sustainable.






**PAINTING
ECO-FRIENDLY FINISHES**

From the very start,
we chose to use
epoxy powder paint
for the painting process
of our products.

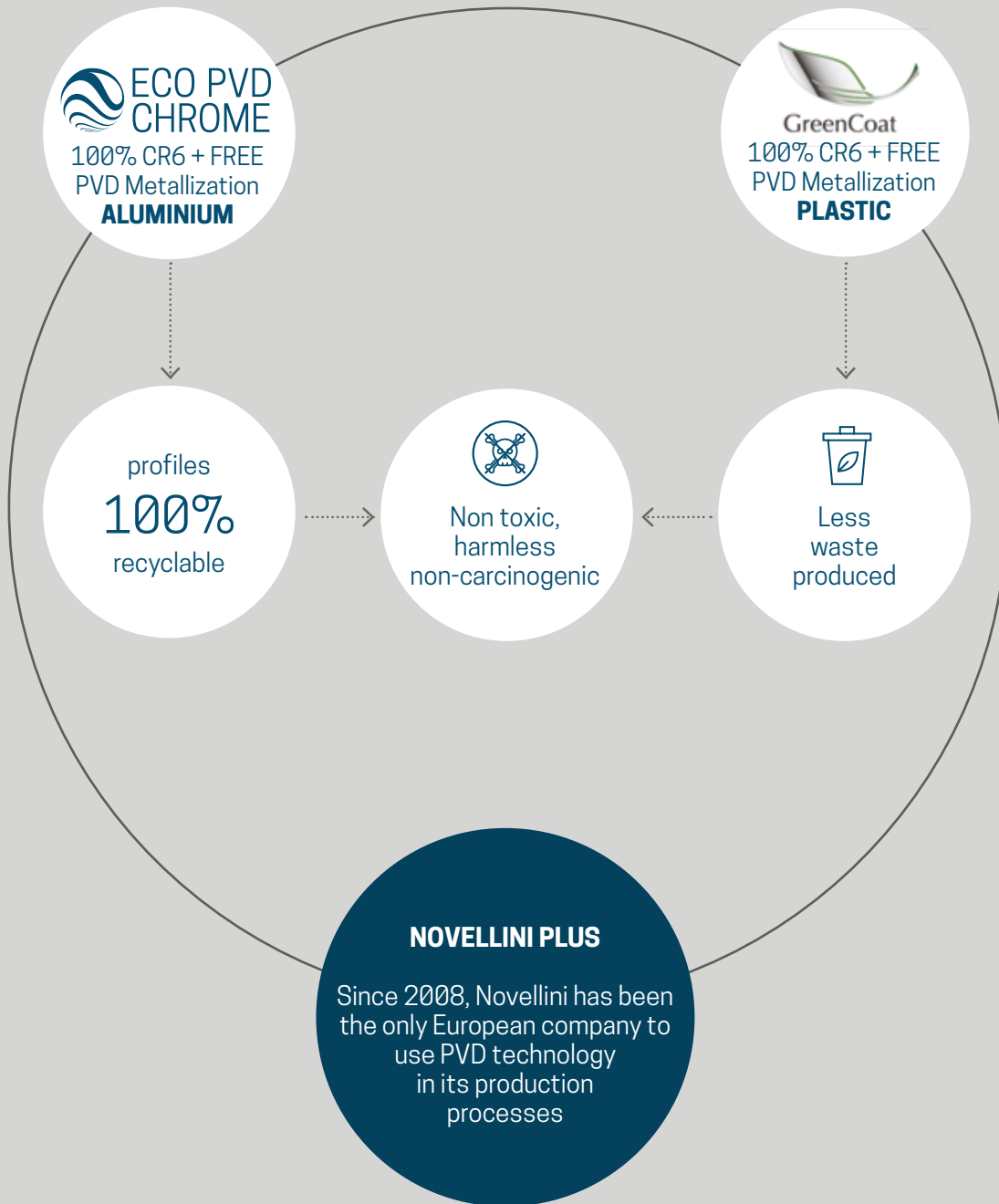


The background of the page is a marbled paper pattern in shades of blue, teal, and white. A large, semi-transparent leaf graphic is centered behind the text.

PVD - TECHNOLOGY

ECO-FRIENDLY FINISHES

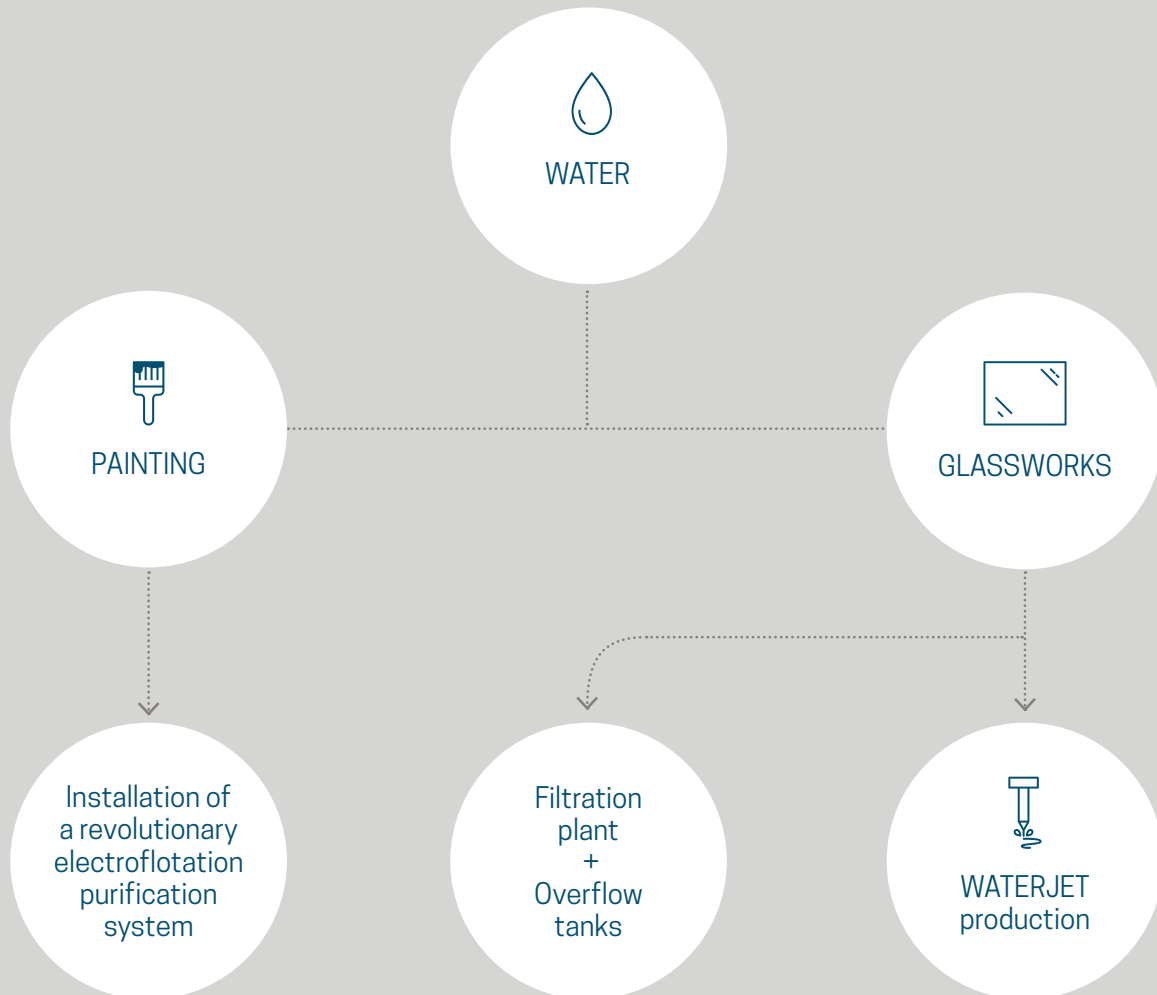
The PVD treatment (Physical Vapour Deposition), used in Novellini for the eco-friendly metallization of the aluminium and plastic parts, is the GREEN alternative to technology based on traditional galvanising (cancer-causing) processes.





WATER

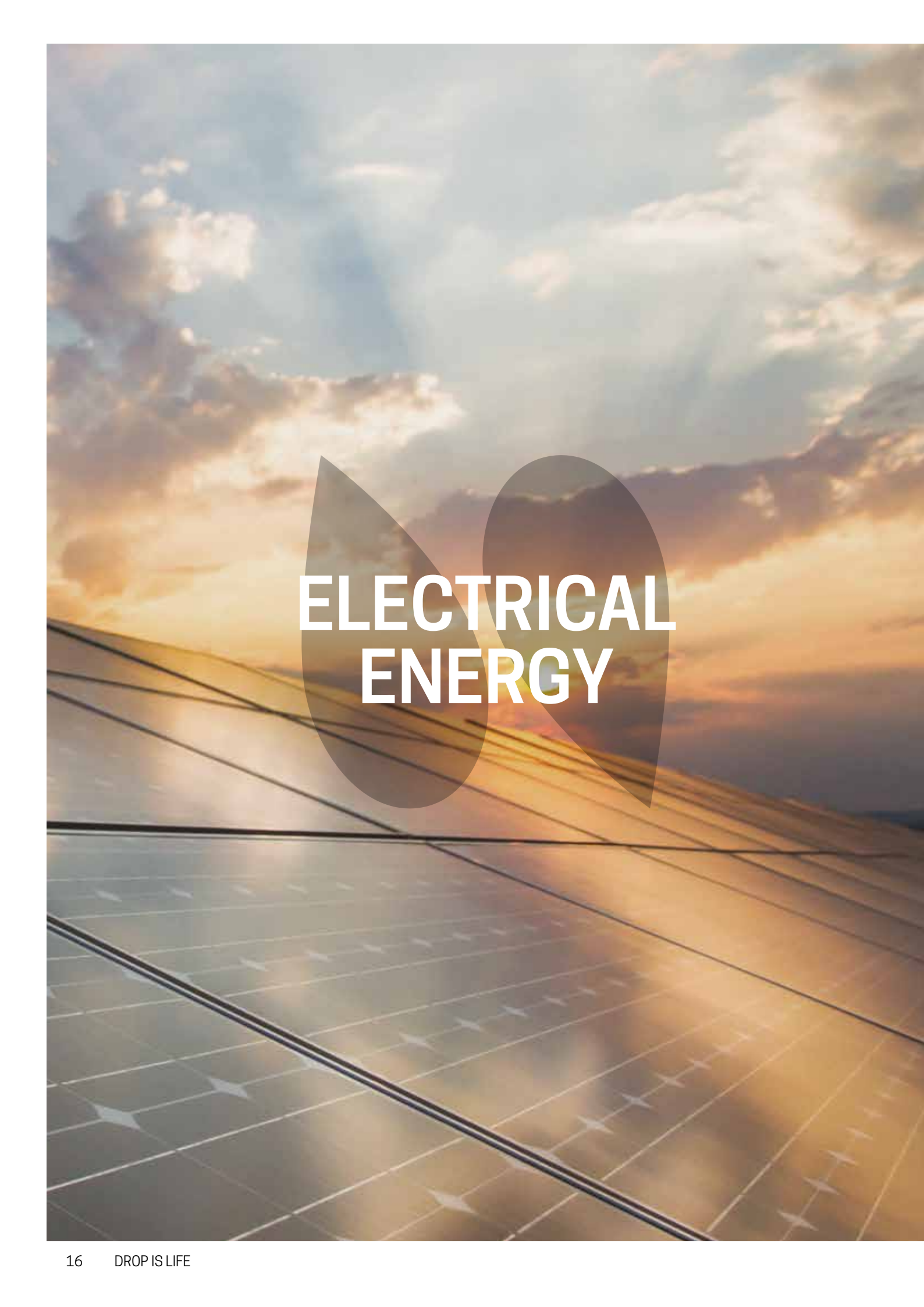
Novellini's sustainable commitment is also geared towards the correct and efficient management and preservation of water for all its production processes.



NOVELLINI PLUS
 Since 2007, **95%** of the water used in the plant is fed back into the production cycle

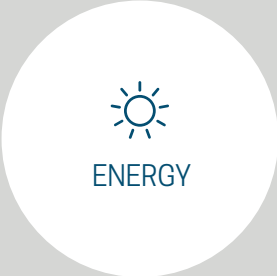
NOVELLINI PLUS
-86% water consumption.
 Yesterday: 100,000 M³ of water used
 2017: 14,000 M³ of water used
 2020 TARGET: 6,000 M³ of water used

NOVELLINI PLUS
 All the water used for the grinding glass processes is re-used over and over again

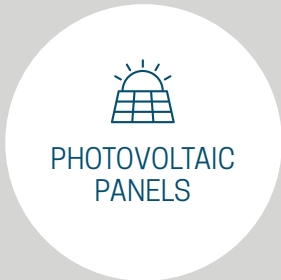


ELECTRICAL ENERGY

Since 2012, the company has decided to exploit the sun's energy by installing three photovoltaic systems. Moreover, we have converted the entire lighting system over to LED lights.



2012



Use of photovoltaic panels:
overall 3 MWp plant

2018



Thanks to
a 20% reduction in compressed
air losses in the network
(from 90,000 to 75,000 l/min of
air produced by our compressors)

2019-2020



Replacement of neon/halogen
lighting with LED lights in all the
production facilities

NOVELLINI PLUS

3,600 MWh
GREEN ENERGY PER YEAR

=

ANNUAL CONSUMPTION
OF 1,200 FAMILY
UNITS

NOVELLINI PLUS

**-330,000
Kwh/y**
ELECTRICAL ENERGY SAVINGS

=

OVER 80 TPE
(TON PETROLEUM
EQUIVALENT)

NOVELLINI PLUS

**- 55%
(-980 MWh)**
ELECTRICAL ENERGY SAVINGS

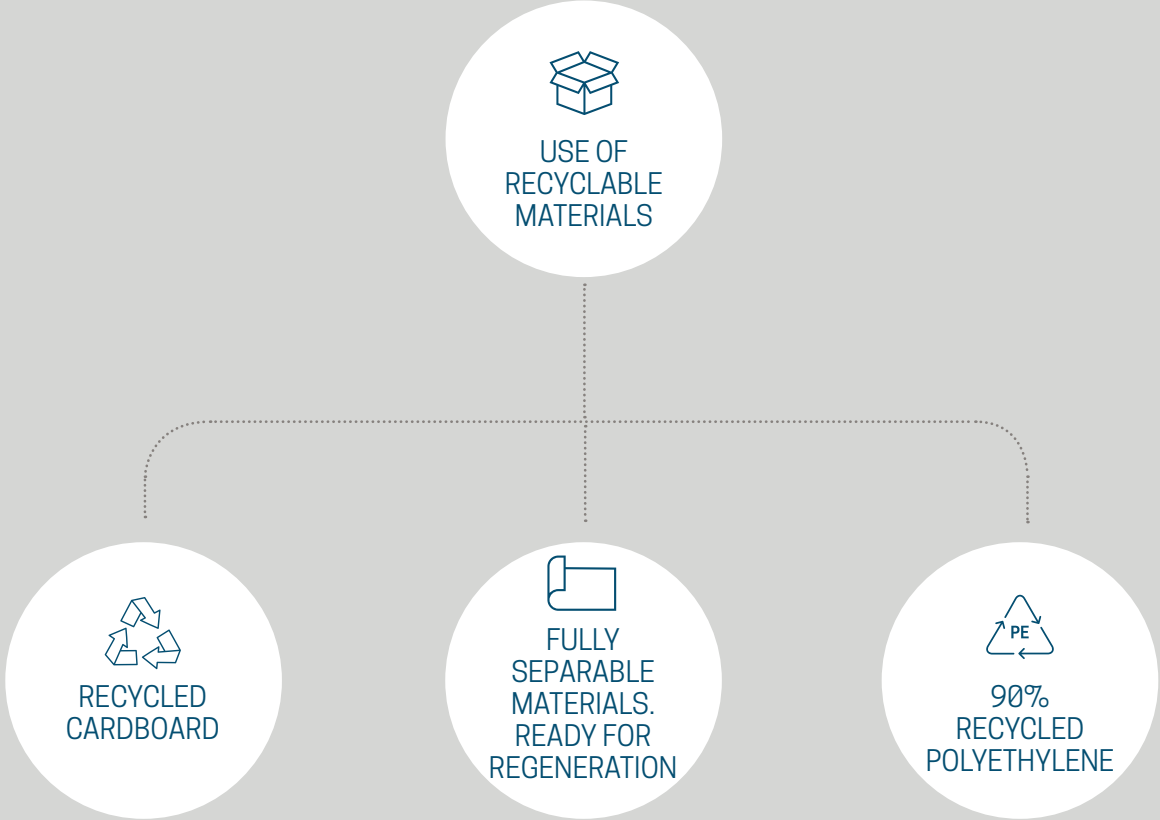
=

ANNUAL CONSUMPTION
OF 300 FAMILY
UNITS



PACKAGING

The materials, which Novellini uses for product packaging, are fully recyclable. Our commitment: to minimise the environmental impact all round. **“The future is circular”**



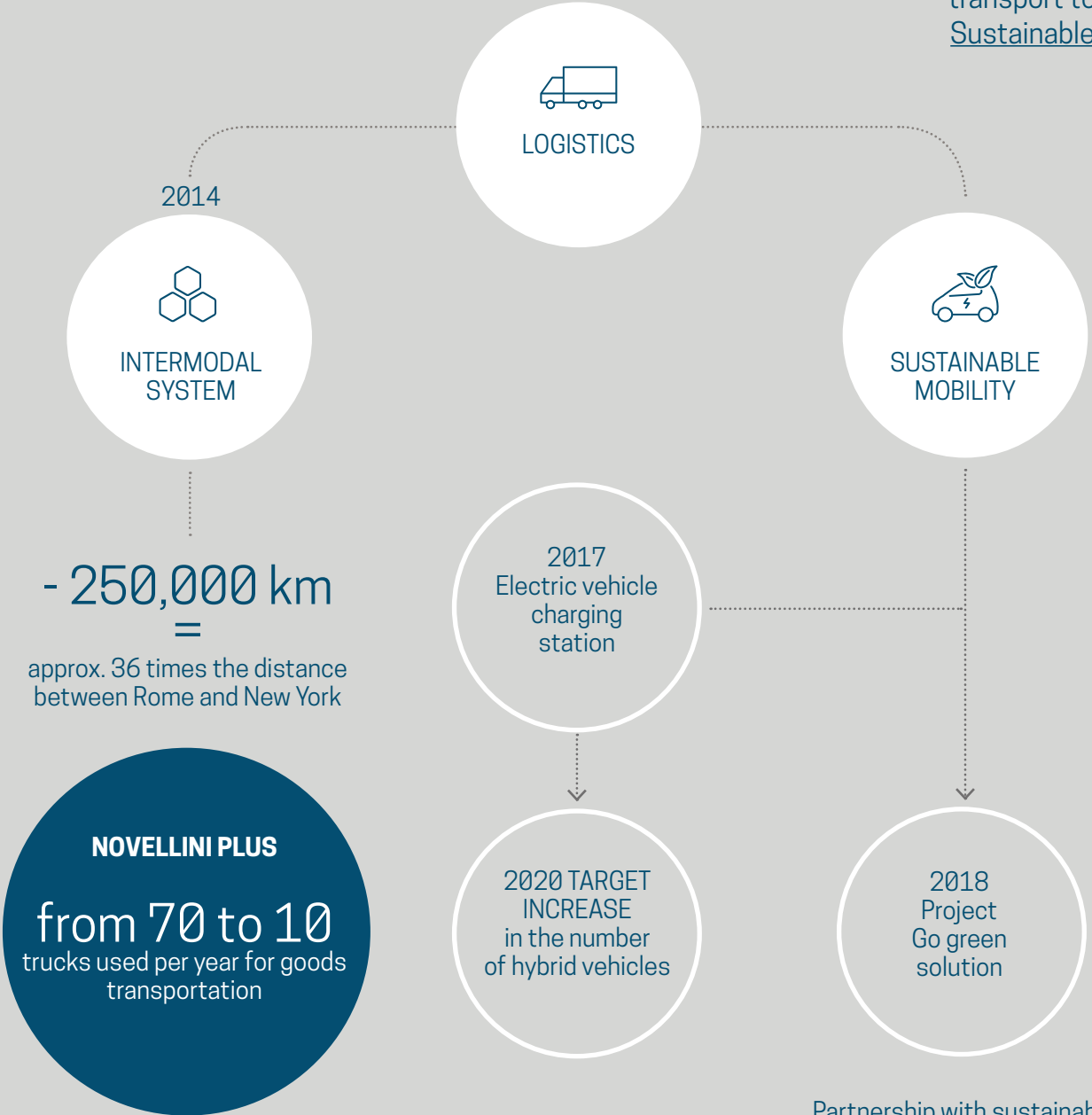
Since 2017, commercial partnership with the ALIPLAST group

An aerial photograph of a winding asphalt road cutting through a dense, lush green forest. The road curves in a figure-eight pattern. Several vehicles, including a red car, a white car, and a blue truck, are visible on the road. The word "LOGISTICS" is written in large, white, bold, sans-serif capital letters across the center of the image, overlaid on a semi-transparent, light-colored circular graphic element.

LOGISTICS

In the logistics sector, Novellini has adopted two solutions for reducing CO₂ emissions.

Intermodal system: using a single container, we transfer the goods from one means of transport to another.
Sustainable mobility.



Partnership with sustainable suppliers who offer solutions to minimise CO₂ emissions

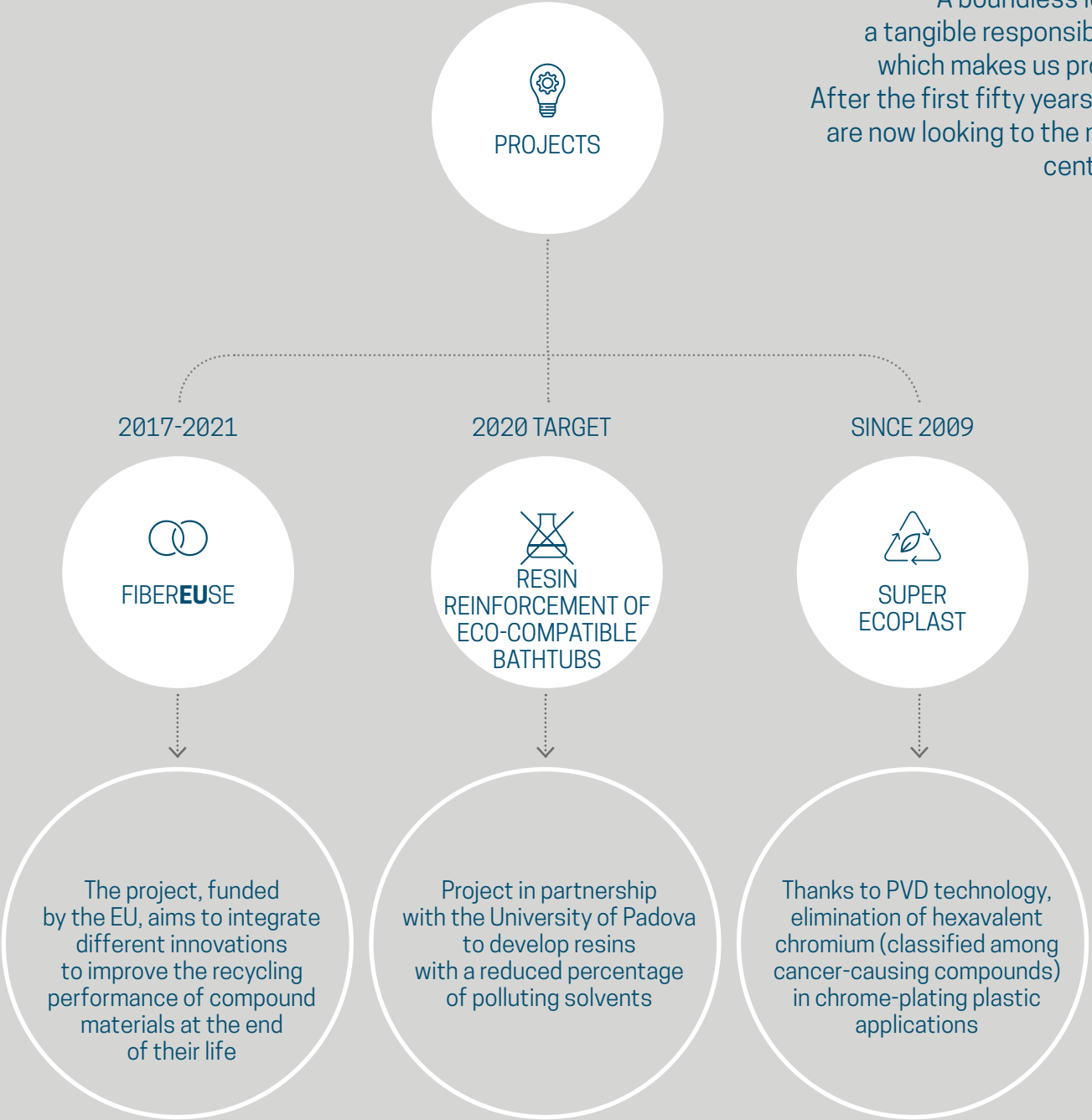




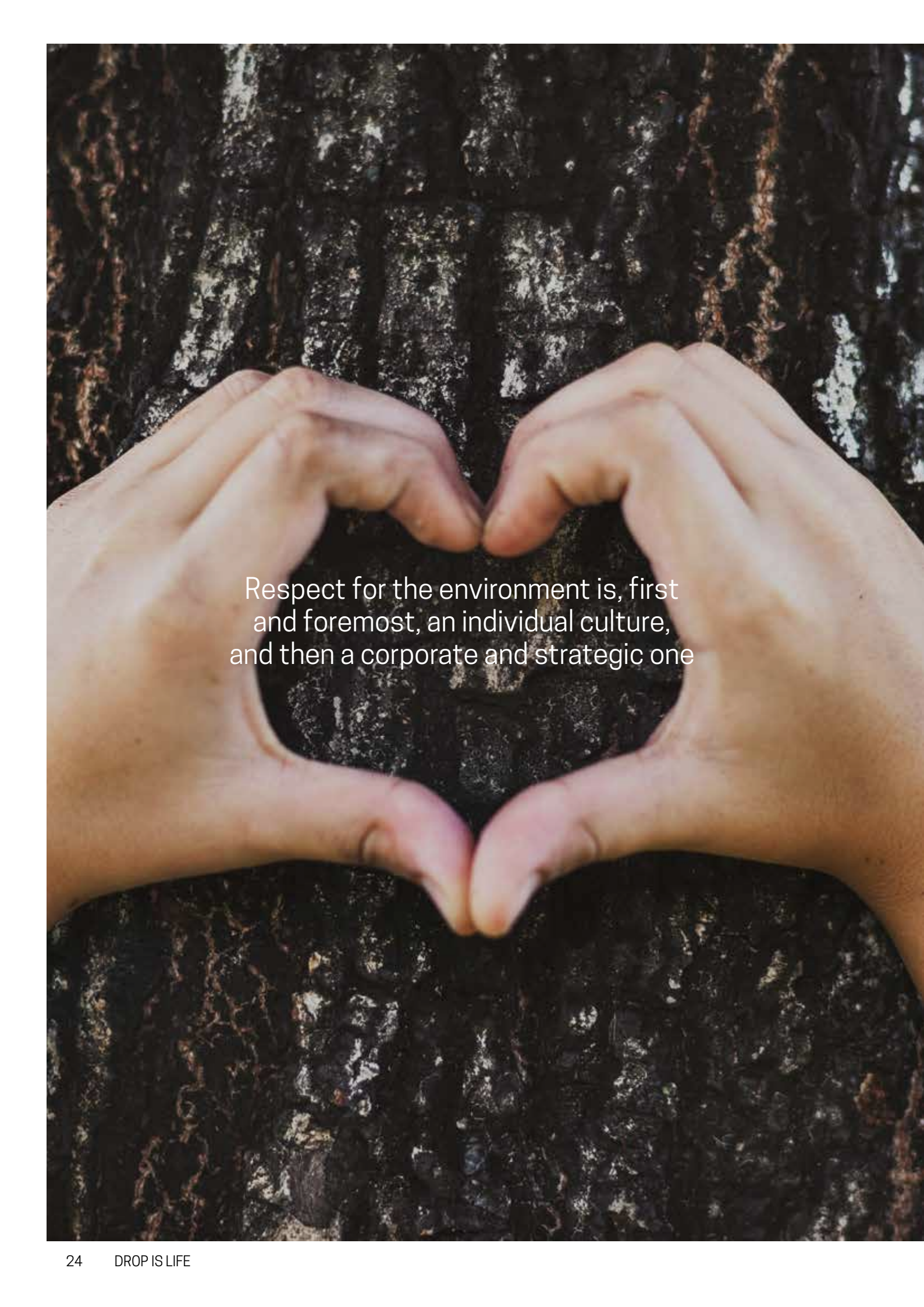
PROJECTS

Our present and future are geared towards the use of technology and industrial processes aimed at saving resources, for a lower environmental impact and the manufacture of Greener products.

A boundless love, a tangible responsibility which makes us proud. After the first fifty years, we are now looking to the next century.



Materials such as polyester reinforced with fibreglass, destined for landfills, are reused as industrial components, e.g. to reinforce our bathtubs

A close-up photograph of two hands, palms facing each other, with fingers curled to form a heart shape. The hands are positioned in the center of the frame. The background is a dark, heavily textured surface, possibly a rock face or a piece of weathered wood, with various shades of black, grey, and brown. The lighting is soft, highlighting the skin tones of the hands.

Respect for the environment is, first
and foremost, an individual culture,
and then a corporate and strategic one



DROP BOTTLE!

With our Drop bottle, we want to contribute towards cutting down on the use of plastic. "A simple gesture can make the difference"



ZERO KM PRODUCTS

Local manufacturers in Mantua and the surrounding province supply fresh fruit and vegetables for the company canteen of our Italian production facility



ECO-SUSTAINABLE TONER

Use of SIMITRI HD toner for our printers which cuts CO₂ emissions

AWARDS

On October 24th 2017, the Italian Ministry of Economic Development dedicated a special mention to Novellini in the annual report on outstanding companies investing in eco-sustainability in their production processes (Green Italy 2017 Report).

Novellini is the only Italian company in the furnishing sector to have received this important award.



CERTIFICATIONS

AWARDS

MATERIAL CONNEXION

Novellini PVD chrome has been selected as a new ecological process finishing in the material connexion library.





COLOPHON

Printed on paper

....

